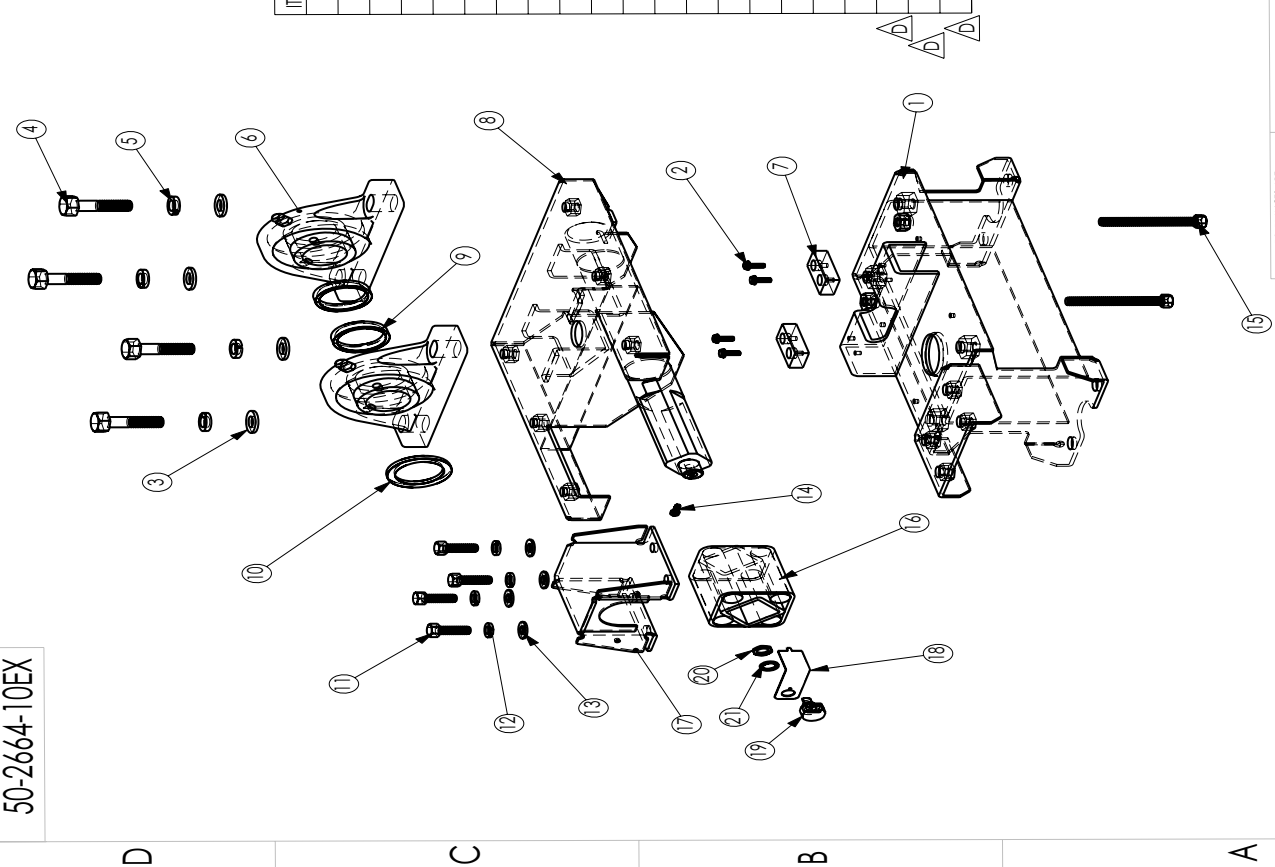


50-2664-10EX

REV.	ZONE	DESCRIPTION	ECN #	BY	DATE
A	-	INITIAL RELEASE	-	FAC	11/17/05
B	-	UPDATED TO MATCH NEW DESIGN	22963	FAC	11/28/05
C	-	UPDATED TO MATCH NEW DESIGN	23341	FAC	4/6/06
D	-	DELETED 96-4916-10 QTY 1 AND ADDED 43-0014-00 QTY 1, 43-0018-00 QTY 1, 50-3127-00	23588	SAG	6/16/06



ITEM NO.	QTY.	PART NO.	DESCRIPTION
1	1	195-2773-00	ROSTA AND BEARING MOUNTING BASE
2	4	43-1274-00	SCREW 10-32 X 1/2 HHCS
3	4	43-0355-00	WASHER, FLAT 1/2 SAE
4	4	43-0397-00	SCREW HHCS 1/2-13 X 1-3/4"
5	4	43-0399-00	LOCKWASHER SPLIT 1/2
6	2	50-0029-10	PILLOW BLOCK BEARING UCP 207-23 F&F
7	2	95-2770-00	STOP BUMPER F/PIVOT ASSY F&F
8	1	95-2775-00	STOP AND BASE WELDMENT
9	2	95-0458-00	WASHER (C) FOR PIVOT ASSY
10	1	95-0457-00	WASHER (B) FOR PIVOT ASSY
11	4	43-0533-00	SCREW 3/8-16 x 1.00 H.H.C.S
12	4	4701-00006-00	LOCK WASHER 3/8 SPLIT
13	4	43-0003-00	3/8 SAE FLAT WASHER ZNC PLTD
14	1	43-1546-00	SCREW 8-32 X 7/16 SHCS
15	2	43-0396-00	SCREW 3/8-16x3 HHCS FULLY THRD
16	1	50-0028-20	SUSPENSION UNIT/ROSTA DR-S 38 X 80
17	1	95-0034-03	ROSTA LOCKING BRACKET FOR DR-S 38 X 80
18	1	95-2768-10	PIVOT POT BRKT F/38X80 ROSTA
19	1	50-3127-00	POT 1K 56 DEG NO NUT SIEBE SENSOR CUBE
20	1	43-0014-00	HEX NUT 3/8"-24 X 3/32 THK
21	1	43-0018-00	LOCKWASHER, INT. 3/8" x 9/16"

DRAWING NAME: PIVOT ASSY, STANDARD FOR F&F SUPERBIKES
 DRAWN BY: FAC DATE: 11/17/05 CHECKED BY: DATE:
 SCALE: FULL SHEET: 1 of 1
 DRAWING NO.: 50-2664-10EX REV: D

DO NOT SCALE DRAWING.
 THIS PRINT IS THE PROPERTY OF HAP CONTROLS INC. AND SHALL NOT BE REPRODUCED, COPIED OR DISCLOSED TO OTHERS. PRINT TO BE RETURNED UPON REQUEST.
 TOLERANCES ARE: FRACTIONS DECIMALS ANGLES
 ± 1/32 ± .015 ± 90°
 UNLESS OTHERWISE SPECIFIED DIMENSIONS ARE IN INCHES.